

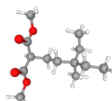
Certificate of Analysis

Product Name: Soy peptone
Cat. No.: GD21202
Batch No.: 1
Chemical Name:

PHYSICAL AND CHEMICAL PROPERTIES

Cas. No.: 73049-73-7
Molecular Formula: $C_{13}H_{24}O_4$
Molecular Weight: 244.33
Storage: Store at -20°C, protect from light

Chemical Structure:



ANALYTICAL DATA

Appearance: A solid
pH(2% solution): 6.79
Water: 1.99%
Total nitrogen(N)(as dry basis): 9.67%
Ash: 8.90%
Conclusion: The product has been tested and complies with the given specifications.

Caution: Product has not been fully validated for medical applications. For research use only.

Tel: (909) 407-4943 Fax: (626) 353-8530 E-mail: tech@glpbio.com

Address: 10292 Central Ave. #205, Montclair, CA, USA